

### Perspectives of German horse breeding, organization and management of herd books and cooperation with studbooks of origin

Dr. Elisabeth Jensen  
CEO & Breeding Manager  
Pferdestammbuch Schleswig-Holstein/Hamburg  
Elected Breeding Manager in Icelandic Horse Parliament of FN

Dr. Klaus Miesner  
Director Breeding & Member Executive Board  
German Equestrian Federation (FN)




### Basics for Germany

**81**  
million people live  
in Germany

**11**  
million consumers  
have general  
interest in horses

**1.7**  
million people ride,  
drive or vault

**1.1**  
million people wish  
to ride




### Economy in Germany

**1.2**  
million horses

**0.3**  
million jobs in the  
horse business

**4**  
horses create  
one job

**18**  
thousand equestrian  
centres, that are  
economically viable




### German Equestrian Federation (FN)

Founded in 1905 by the breeders

Nationwide  
association

Campaigners for animal  
welfare and proper use  
of horses.

Competent contact  
for all questions  
about horses




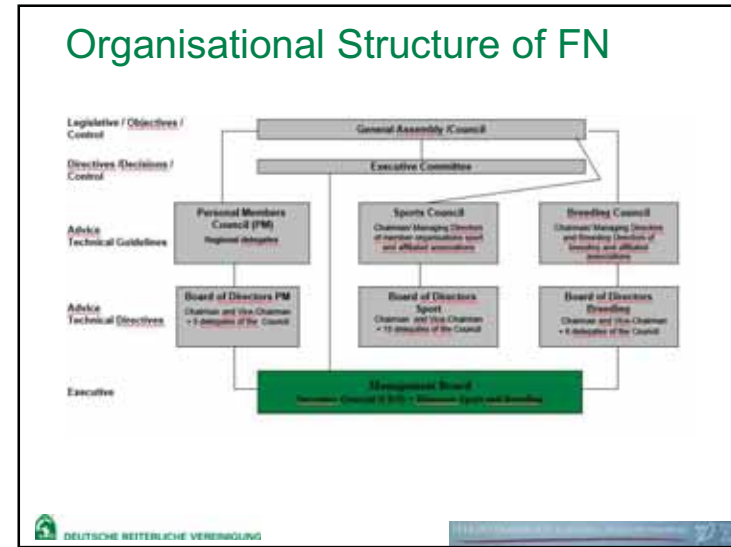
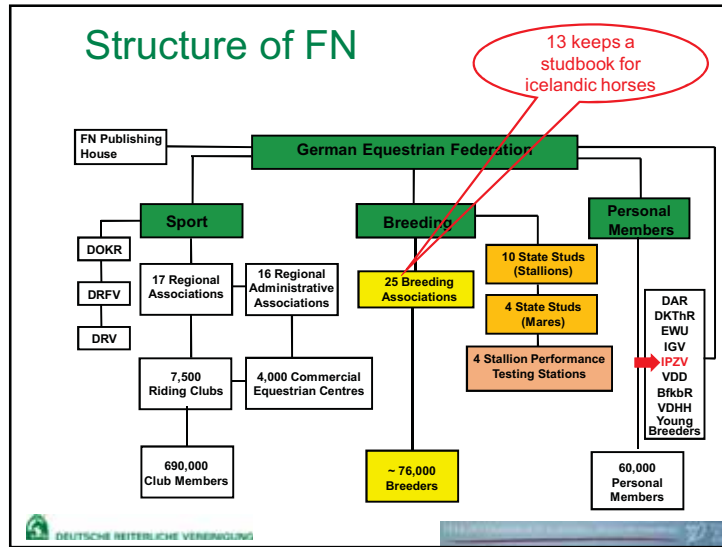
Horse sport

8th largest sport  
association in Germany

Horse breeding

Unique alliance of sport and breeding





### FN Department Breeding

25 breeding associations

Breed value assessment

Cooperation with breed associations and studbooks of origin

Stallion performance testing

over 130 different breeds

Contacts to national and international authorities

DEUTSCHE REITERLICHE VEREINIGUNG

### Cooperation on National level

i.e. with

- Member Association and Associated Members
- Communities of interests of a breed (i.e. IPZV)
- Association of German Pony Breeders (AGP)
- Federal Ministry of Agriculture (BMEL)
- State Ministries of Agriculture
- German Farmers Union (DBV)
- Performance Testing Stations etc.

DEUTSCHE REITERLICHE VEREINIGUNG

## Cooperation on European level

i.e. with

- EU Commission
- COPA (Working Party on Horses)
- Association of German Animal Breeders (ADT)
- European Horse Network
- European Equestrian Federation (EU-Committee für WBFSH)
- European Association for Animal Production (EAAP/EVT)
- several studbooks of origin and international breed committees like ICCPS (Connemara), INFM (New Forest), ISPC (Shetland), etc.



## Cooperation on Global level

with

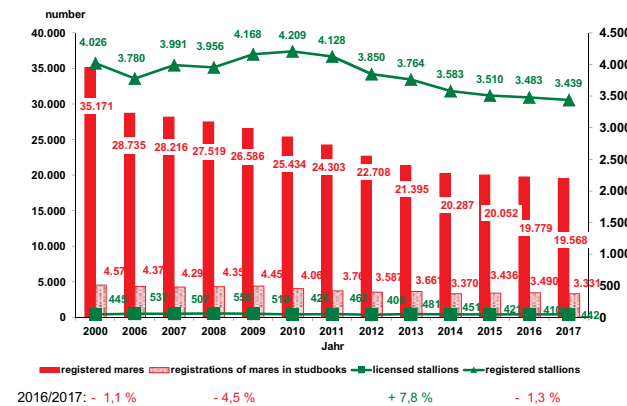
- WBFSH (GER leads Department External Cooperation)
- FEI (FEI/WBFSH Council, FEI/WBFSH Young Horse Championships)
- some studbooks of origin



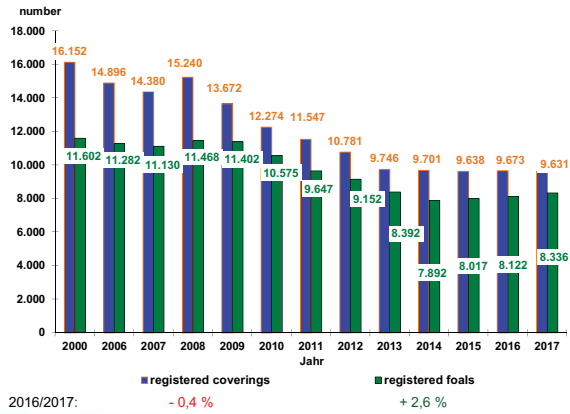
## Development (all breeds)



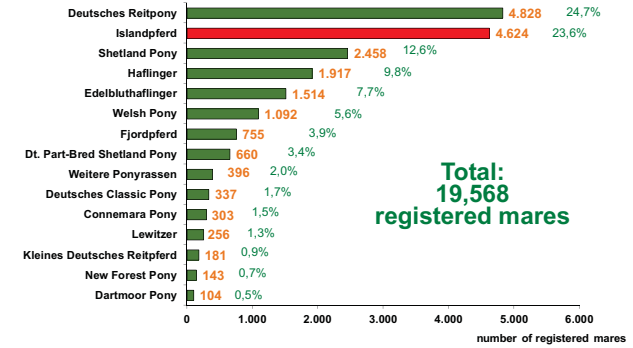
## Development in Pony Breeding



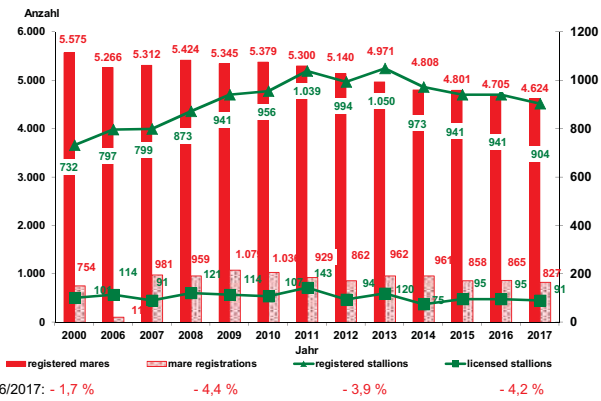
## Development in Pony Breeding



## Distribution of Pony breeds

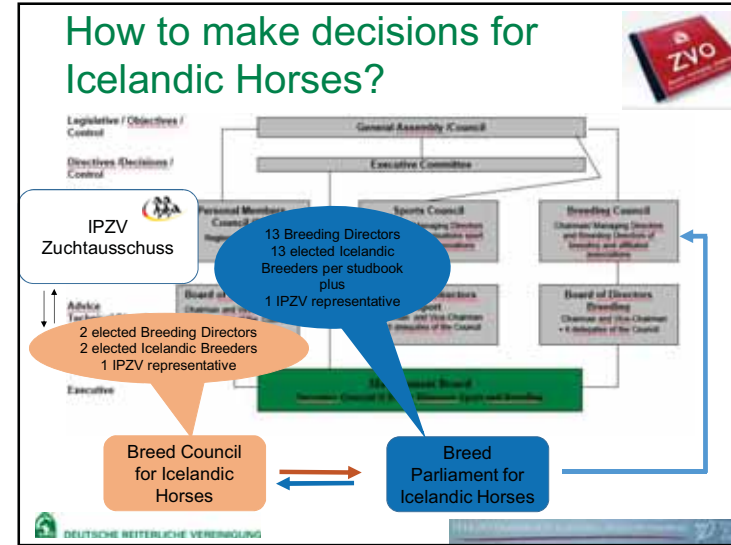
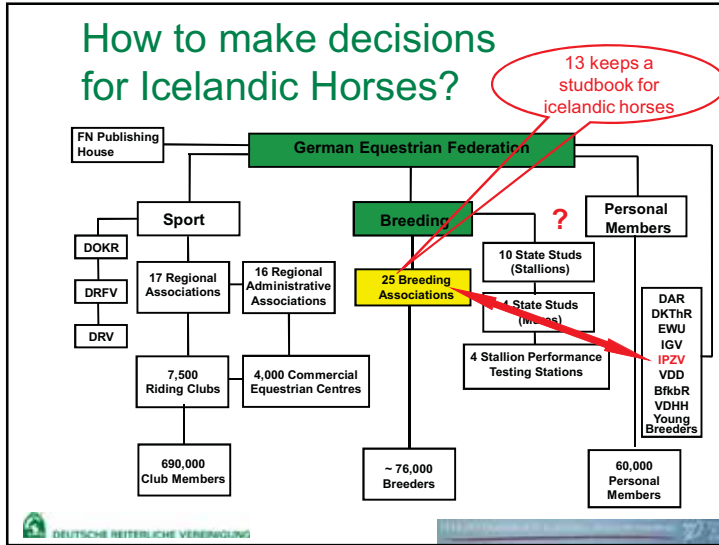


## Development of Icelandic Horses



## Development of Icelandic Horses





### What is important for the work of FN and their Members?

DEUTSCHE REITERLICHE VEREINIGUNG

- ### To cooperate mainly with breeding associations which are ...
- What is a breeding organisation in accordance with Decision 92/353/EEC
- *breeders' organisation or association*
  - **Approved or recognised** by competent authority
  - Legal personality, minimum infrastructure
  - Keep a studbook
  - Carry out a breeding programme
  - Issue identification documents
  - *legal right to be approved by authorities of the Member State of its headquarters*
  - *activity not limited to one Member State*
- DEUTSCHE REITERLICHE VEREINIGUNG

## Our basics are the principles for the breed!



### Principles to be established by the studbook of the origin

- systems for pedigree recording
- characteristics of the breed
- identification (e.g. number, technique)
- selection objectives
- division of the studbook in classes
- lineages entered in other studbooks

## Please be aware of the fact that in Germany ...



### Practical Consequences

- ➔ ▪ several breeding organisations for the same breed can exist in one Member State
- more than one mother studbook for a breed
- organisations not following the principles of the studbook of origin breed - legally - a different breed
- ➔ ▪ cases of conflicts between mother and daughter studbooks because of different implementation of legislation in Member States

## Studbook entry and subdivision comply with EU legislation



### Entry into studbooks (Dec. 96/78/EC)

stallions/mares

main section for animals with legal right to enter (parents in the studbook)

supplement without legal right to enter (parents not in the studbook)

may be further divided (elite, super elite, ...)

class without additional requirements

class with additional requirements



## Studbook entry comply with EU legislation



### Entry in studbooks (Decision 96/78/EC)

- Legal right to enter the main section of the studbook of its breed for each animal whose parents are entered in the main section
- ➔ ▪ same animal may be entered in several studbooks
- ➔ ▪ need to establish a continuous identity - UELN
- ➔ ▪ Main section may be divided into classes according to the animals' merits
- Supplementary section as option for "open studbooks", no harmonised upgrade criteria

## Some German studbooks have expanded their territory of activity



### Cross-border activities of approved breeding organisations

- ➔ *possible without restrictions because of*
  - principle of the common market
  - harmonised criteria (92/353/EEC)
  
- ➔ *practiced in a number of cases*
  - problems with identification
  - requires communication between authorities
  - no established rules

## How does practical work proceed in Germany?

## Practical work in Germany

13 breeding associations caring for Icelandic horses

Acknowledgement by different national authorities

Licensing of mares and stallions



Membership FN

Registration of foals  
Passport issuing organisation

Responsibility for performance tests

Registration in Worldfengur  
Cooperation with IPZV

## Practical work in Germany

13 breeding associations

10 national authorities



Coordination:  
FN Warendorf



## Practical work in Germany

- FN: Voluntary membership of the breeding organisations
- Under that roof:  
Development of breeding programmes based on the rules of the studbook of origin and the national legislation of animal breeding
- Parliament of the breed  
Built by breeding organisations and IPZV

## Practical work in Germany

- Licensing of mares/stallions:
- Pedigree in database?
- Confirmation of the identity, measurements
- Judging: the studbook is divided into classes concerning the quality of confirmation and performance test
- Acknowledgement of FIZO performance tests / IPZV young horse assessments

## Practical work in Germany

- Registration of foals:
- Membership of the breeder
- Announcement of the birth of the foal included service certificate
- Comparison of the data from the stallion holder and date of birth
- Are both parents licensed? In the database/purebred?
- Marking and registration by a person authorized by the breeding organisation
- Issuing the passport and caring for the data of the national database HIT

## Practical work in Germany

- Registration of foals:
- Since 2005 (most of) the German foals are entered in Worldfengur
- All German breeding organisations do not use WF as database for the studbook
- Reasons:
  - Demands of the national law
  - One system of registration for all breeds
  - Link with the system of accounting



## Practical work in Germany

- Performance test (FIZO):
- Since 2014 the breeding organisations in Germany are responsible for the performance tests
- Concerning the Icelandic horses the IPZV is mandated to carry out the „FIZO“
- Results of performance tests conducted in other countries according to the international rules are also fully accepted

## What will change from November 2018 onwards?

## Animal Breeding Regulation



REGULATION (EU) 2018/1012 OF THE EUROPEAN PARLIAMENT AND OF THE COUNCIL of 8 June 2018 on production and geographical conditions for the breeding, trade in and entry into the Union of purebred breeding animals, hybrid breeding pigs and the genetic products thereof and repealing certain acts in the area of animal breeding ('Animal Breeding Regulation')

Official Journal L 171

- Date of application 1 November 2018.
- Repeals Directive 90/427/EEC
- Article 8(1) of Directive 90/427/EEC shall continue to apply until 21 April 2021 (=date of application of AHL)

### New rules in the Breeding Regulation

- • *Directly applicable Regulation*
- *Adaptation to new legislative procedures*
- *Rules on official and Commission controls*
- *Separation of recognition of breed society as legal entity from approval of breeding programme*
- • *Clarifies cross-border activities of breed societies*
  - *Simplifies suspension and disapproval of a breeding programme, while recognition of breed society continues for a time*
- • *Breed societies do no longer issue passports, equidae are identified in accordance with animal health legislation [from 2021 on (Animal Health Legislation)]* !



### New rules in the Breeding Regulation

- *Purbred breeding animals of the equine species instead of „registered equidae“ (= animal health terminus)*
- ➔ ▪ *Breed society decides whether it establishes certain principles itself or takes over those principles from a breeding book of the origin of the breed*
- *Entry in breeding book at a later age possible (DNA)*
- ➔ ▪ *Certain breeding technics may be forbidden (But an allowed technic cannot be limited)*




### New rules in the Breeding Regulation

- *Upgrade from supplementary section through both female and male line possible*
- *Rules on the creation of a new breed also for equidae*
- ➔ ▪ *Rules on performance testing and genetic evaluation and documentation in zootechnical certificate*
- ➔ ▪ *Filial breeding book may have additional classes as compared to book of the origin of the breed*
- ➔ ▪ *WAHO-like organisations may establish principles like breeding books of the origin of breed*



### Contacts in Germany

<p>1. Pferdesportverband Baden-Württemberg e.V.          Am Zirkelbach 11, 72632 Gernsheimen-Merkelshausen          Tel: 07285-909220, Fax: 07285-909228          E-Mail: <a href="mailto:ponyverband@pony-ww.de">ponyverband@pony-ww.de</a>          Internet: <a href="http://www.pony-ww.de">http://www.pony-ww.de</a></p>	<p>8. Pferdesportverband, Süddeutsche Föderation Hamburg e.V.          Hohenhof 119, 21464 Buxtehude          Tel: 04231-330770, Fax: 04231-330142          E-Mail: <a href="mailto:info@pferdesportverband-ah.de">info@pferdesportverband-ah.de</a>          Internet: <a href="http://www.pferdesportverband-ah.de">http://www.pferdesportverband-ah.de</a></p>
<p>2. Pferdesportverband Brandenburg-Anhalt e.V.          (ehemals: Verband, Hauptstadt 104-10245 Neuenhagen/Chausse)          Tel: 033879-13201, Fax: 033879-13549          E-Mail: <a href="mailto:neuenhagen@pony.de">neuenhagen@pony.de</a>          Internet: <a href="http://www.pferde-brandenburg-anhalt.de">http://www.pferde-brandenburg-anhalt.de</a>          Geschäftsstelle, Uppiggraben 20, Tel. 03976 Oberndorf          Tel: 03976-714400, Fax: 03976-714404          E-Mail: <a href="mailto:sternhof@pony.de">sternhof@pony.de</a>          Internet: <a href="http://www.pferde-sachsen-anhalt.de">http://www.pferde-sachsen-anhalt.de</a></p>	<p>9. Bayerischer Zuchtverband für Kaltblüter und Spezialblutrossen e.V.          Landshuter Str. 11, 81923 München          Tel: 089-520967303, Fax: 089-520967306          E-Mail: <a href="mailto:info@zfv.de">info@zfv.de</a>          Internet: <a href="http://www.pferde-aktuell.de">http://www.pferde-aktuell.de</a></p>
<p>3. Verband der Pferdesportler Westfalen-Vogelwangen e.V.          Charles-Couron-Ring 4, 50518 Ronsdorf          Tel: 02151-48033076, Fax: 02151-44033077          E-Mail: <a href="mailto:info@pferdesportverband-wo.de">info@pferdesportverband-wo.de</a>          Internet: <a href="http://www.pferdesportverband-wo.de">http://www.pferdesportverband-wo.de</a></p>	<p>10. Verband der Pony- und Wäpferfreizeitler Hessen e.V.          Vor den Hühnen 32, 31103 Burgdorf          Tel: 05136-6792963, Fax: 05136-6794034          E-Mail: <a href="mailto:ponyverbandhessen@v-net.de">ponyverbandhessen@v-net.de</a>          Internet: <a href="http://www.ponyverband.de">http://www.ponyverband.de</a></p>
<p>4. Rheinisches Pferdesportverband e.V.          (ehemals: Verband) F. 41189 Mönchengladbach          Tel: 02165-4219110, Fax: 02165-4279520          E-Mail: <a href="mailto:info@pferdesportverband-rl.de">info@pferdesportverband-rl.de</a>          Internet: <a href="http://www.Pferdesportverband.de">http://www.Pferdesportverband.de</a></p>	<p>11. Verband der Pony- und Pferdefreizeitler Hessen e.V.          (ehemals: V) 64347 Lohrhausen          Tel: 06150-4254034, Fax: 06150-4254035          E-Mail: <a href="mailto:ponyverband@v-net.de">ponyverband@v-net.de</a>          Internet: <a href="http://www.ponyverband.de">http://www.ponyverband.de</a></p>
<p>5. Pferdesportverband Rheinland-Pfalz-Saar e.V.          Am Föhrenhof 1, 67916 Dirmbach          Tel: 06307-67926, Fax: 06307-6792655          E-Mail: <a href="mailto:ponyverband@pferdesport-rlp.de">ponyverband@pferdesport-rlp.de</a>          Internet: <a href="http://www.pferdesport-rlp.de">http://www.pferdesport-rlp.de</a></p>	<p>12. Pferdesportverband Rhein-Eifel e.V.          (ehemals: V) 5, 49377 Vechta          Tel: 04441-93361, Fax: 04441-933629          E-Mail: <a href="mailto:info@pferdesportverband.com">info@pferdesportverband.com</a>          Internet: <a href="http://www.pferdesportverband.com">http://www.pferdesportverband.com</a></p>
<p>6. Pferdesportverband Sachsen-Thüringen e.V.          Kurtze-Kulicke-Platz 2, 01462 Müritzerberg          Tel: 035207-89638, Fax: 035207-89648          E-Mail: <a href="mailto:info@pony.de">info@pony.de</a>          Internet: <a href="http://www.pony.de">http://www.pony.de</a></p>	<p>13. Zuchtverband für deutsche Pferde e.V.          Am Hühner 28, 37235 Verden          Tel: 04231-62880, Fax: 04231-6789          E-Mail: <a href="mailto:info@zfv.de">info@zfv.de</a>          Internet: <a href="http://www.zfv.de">http://www.zfv.de</a></p>
<p>7. Westfälisches Pferdesportverband e.V.          Hurlerhöfen 71, 48157 Münster          Tel: 0251-320900, Fax: 0251-3209004          E-Mail: <a href="mailto:info@pferdesportwest.de">info@pferdesportwest.de</a>          Internet: <a href="http://www.westfaelingspferde.de">http://www.westfaelingspferde.de</a></p>	<p>Deutsche Reiterliche Vereinigung (FN) - Bereich Zucht          Freiherr-von-Langen-Straße 13, 48231 Warendorf          Tel.: +49(0)2581-6362-157, Fax: +49(0)2581-6362105          E-Mail: <a href="mailto:Meuypers@fr-dokr.de">Meuypers@fr-dokr.de</a>          Internet: <a href="https://www.pferd-aktuell.de/deutsche-pony-zucht">https://www.pferd-aktuell.de/deutsche-pony-zucht</a></p>

