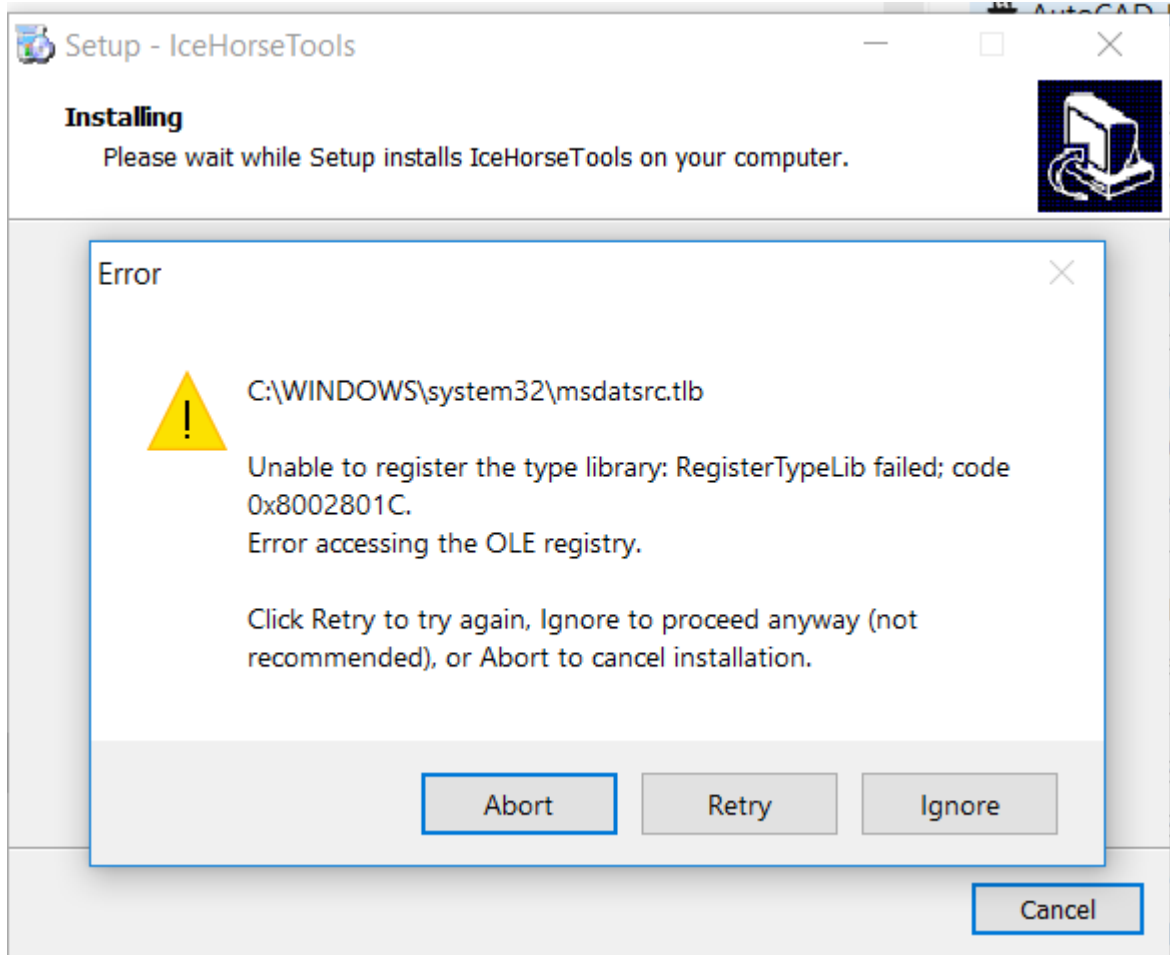


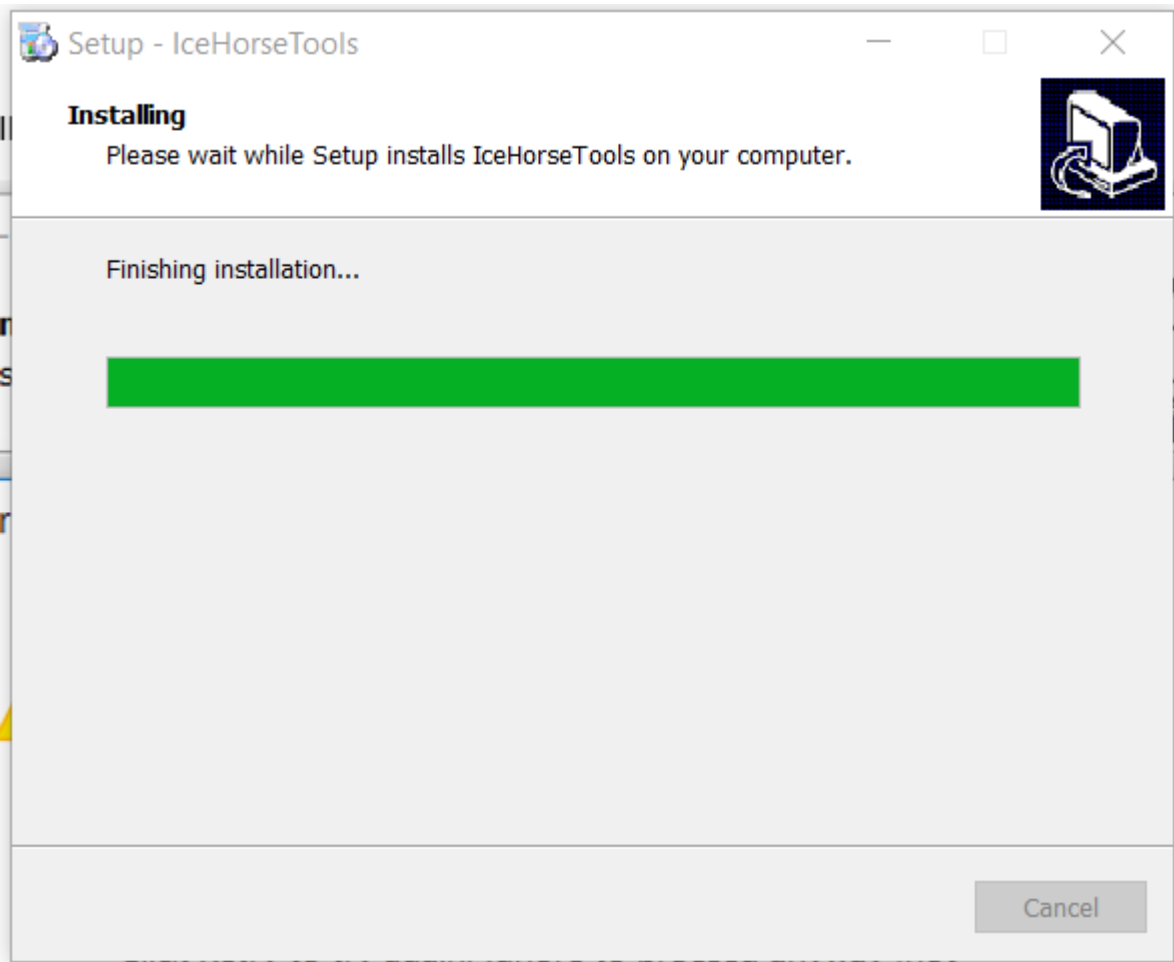
# IceTest

Installation Problems in Windows 8 or 10, by Tore Berg

During Install this pop up. Select Ignore



Finishing installation stops

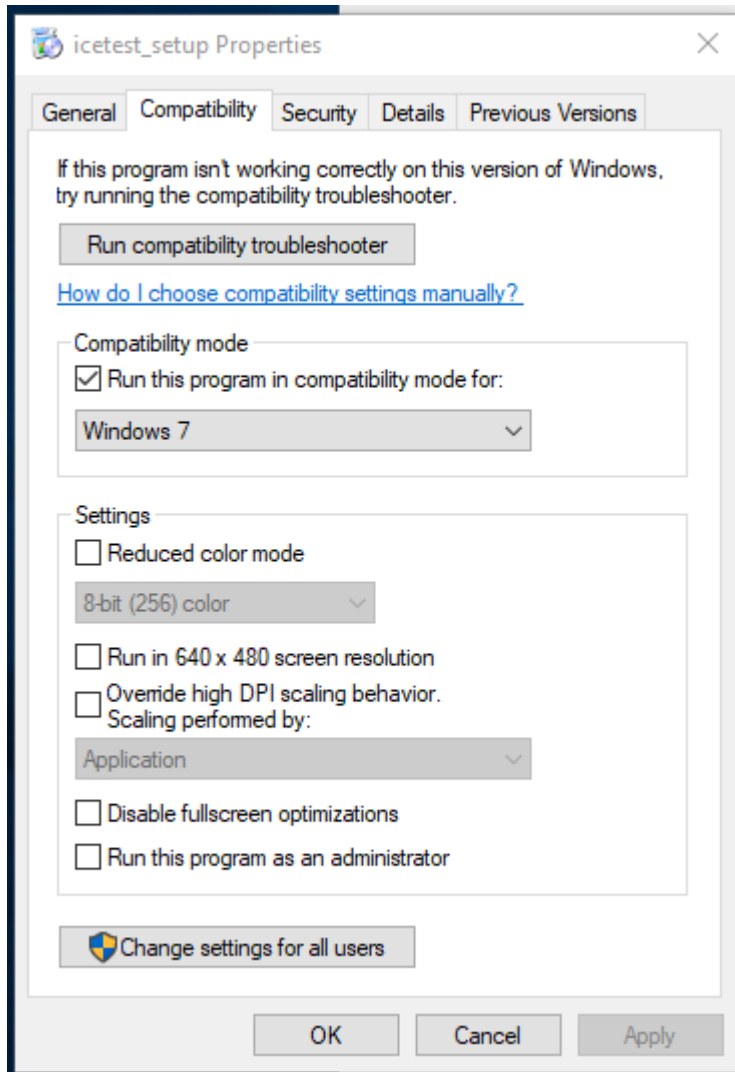


Need to go to task manager to stop installation

How to Fix (at least on my computer)

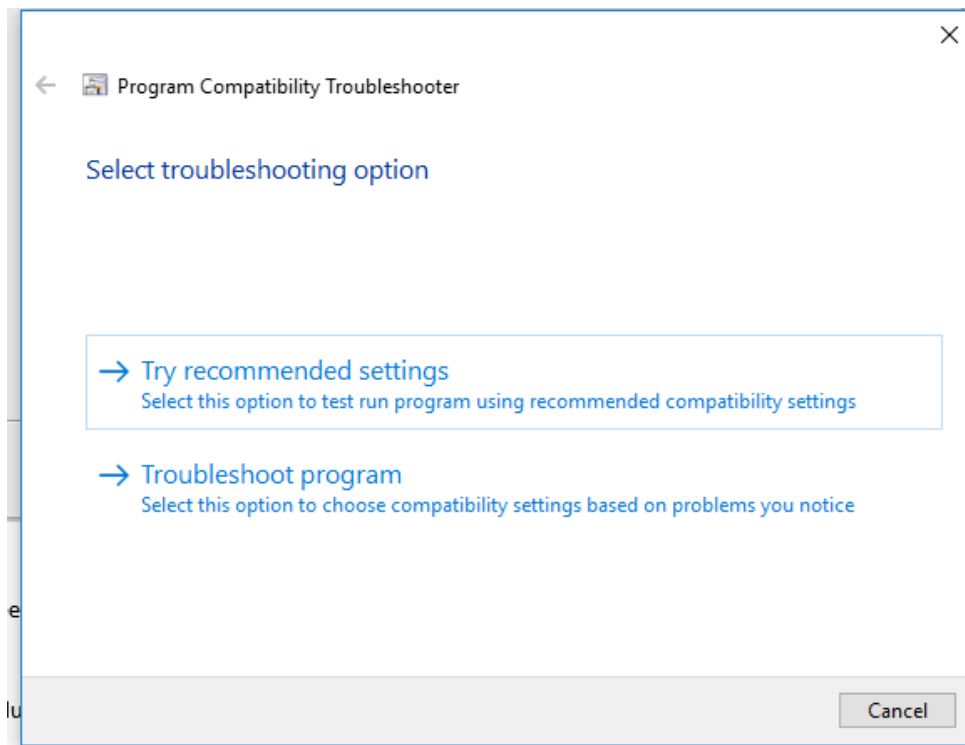
Right click on the setup file and select properties

Select Compatibility

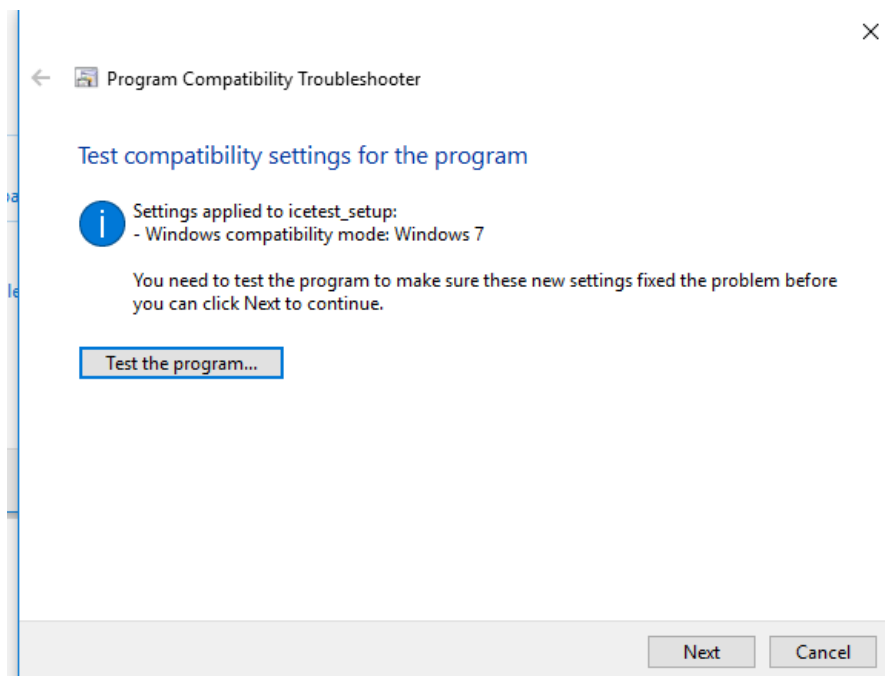


Run compatibility troubleshooter

Select Try recommended settings



Select test the program and installation of icetest starts



When Icehorse is installed select cancel.